

SHICO. SELF-POWER CONTENTS GAUGE

MODEL : SHC-300 Series

■ OPERATING PRINCIPLE

The self-powered contents gauge unit consists of transmitter chamber, capillary tube and indication gauge. The weight of the fluid column in the tank will be transformed into gas pressure in the transmitter chamber.

This gas pressure is transferred a capillary tube onto the indicating gauge, that means the weight of the fluid column in the tank is directly proportional to the indication.

In case of over-or under-pressure in the tank is no compensation possible.



■ APPLICATION

Self-powered content gauge is widely used for Diesel oil, Lube. oil, Heavy fuel oil. Solvents gas oil, Fresh water, and all no corrosive Liquid.

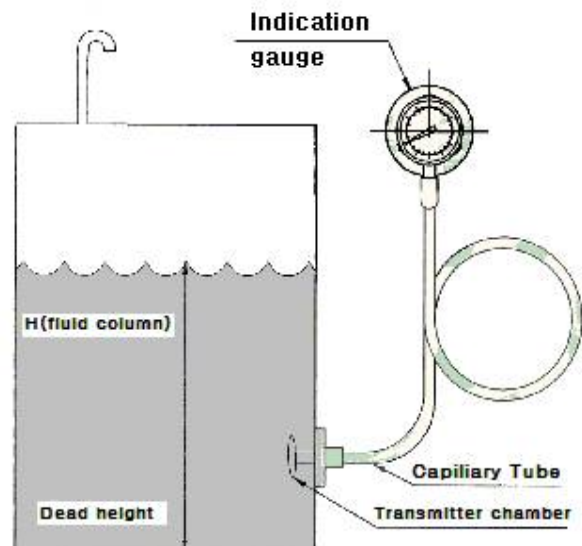
■ FEATURES

- No floats or probes.
- Completely automatic.
- Local indication.
- Requires no external power.

■ SPECIFICATIONS

Maximum error	At reference conditions the maximum error will not exceed $\pm 1.0\%$ of full scale deflection.
Range (Tank depths)	From 1 to 50 meters
Over load	100% above maximum range
Operating temperature	Indication gauge : $-40 \sim +70^{\circ}\text{C}$
	Transmitter chamber : $-40 \sim +120^{\circ}\text{C}$
Indication gauge	Mounting : Wall
	Diameters : $\phi 150\text{mm}$
	Gauge body Mat'l : Aluminum alloy
	Graduation : Hight and volume
Capillary tube	Material : SUS 304
	Length : On request(Standard. 4m) 4M

■ GAUGE INSTALLATION DIAGRAM



SAM HOI INDUSTRIAL CO., LTD.

#48-2, 66-BeonGil, Golden root-Ro, Juchon Myeon, Gimhae-city Gyeongnam, Korea

Tel. +82-55-321-0578 Fax. +82-55-321-0573

E-mail: shico007@chol.com Homepage : www.shico.co.kr

C-26

SHICO. SELF-POWER CONTENTS GAUGE

MODEL : SHC-300 Series

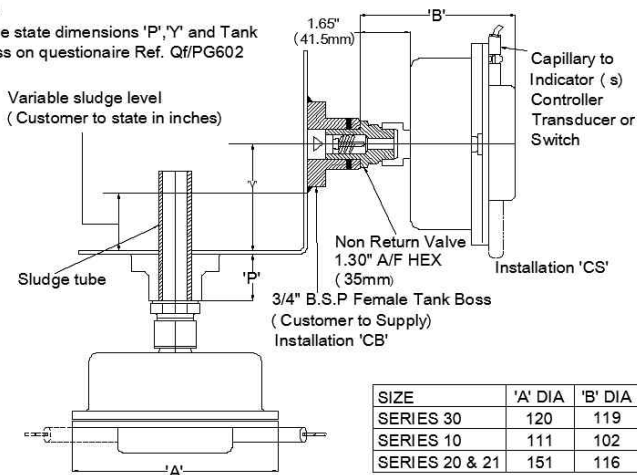
■ INSTALLATION DIMENSION

■ Transmitter(Tank side and bottom mounting)

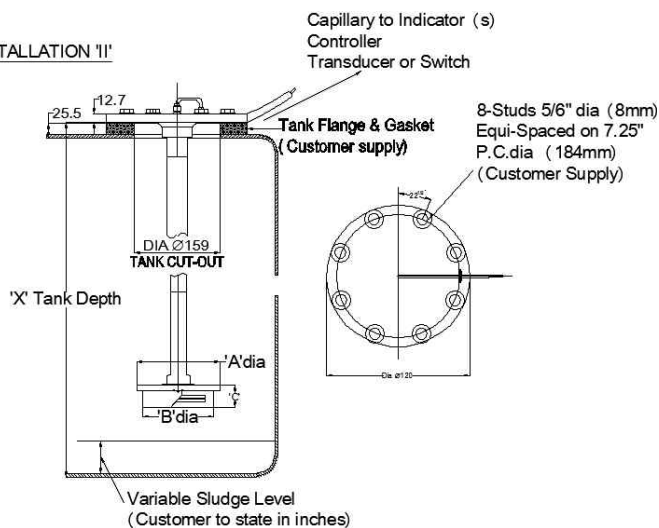
■ Transmitter (In tank mounting)

NOTES

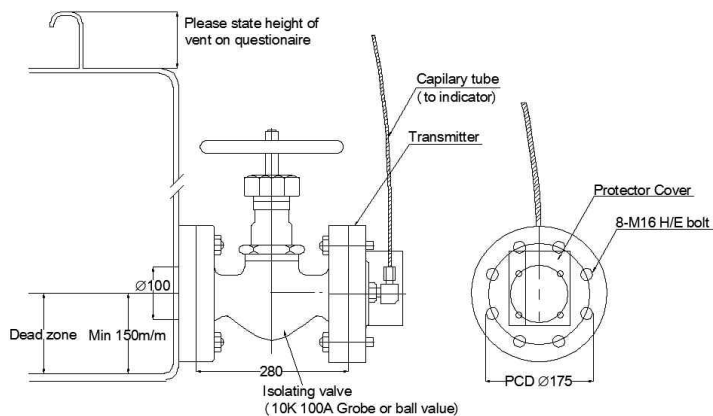
1. Please state dimensions 'P', 'Y' and Tank thickness on questionnaire Ref. Q/PG602



INSTALLATION 'I'



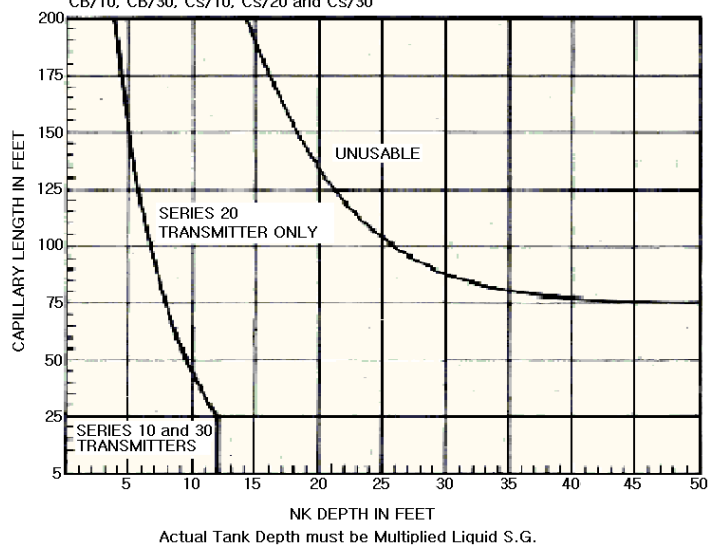
■ Maintenance Ass'y



■ TRANSMITTER SELECTION CHART

NOTE:

For controllers use Series 20 transmitter.
For use in selection of transmitter types IC/10, IC/20, IC CB/10, CB/30, Cs/10, Cs/20 and Cs/30



SAM HOI INDUSTRIAL CO., LTD.

#48-2, 66-BeonGil, Golden root-Ro, Juchon Myeon, Gimhae-city Gyeongnam, Korea

Tel. +82-55-321-0578 Fax. +82-55-321-0573

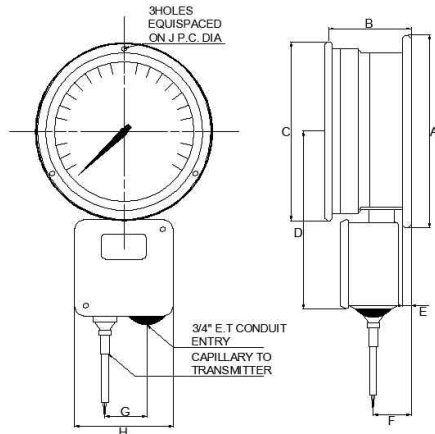
E-mail: shico007@chol.com Homepage : www.shico.co.kr

C-27

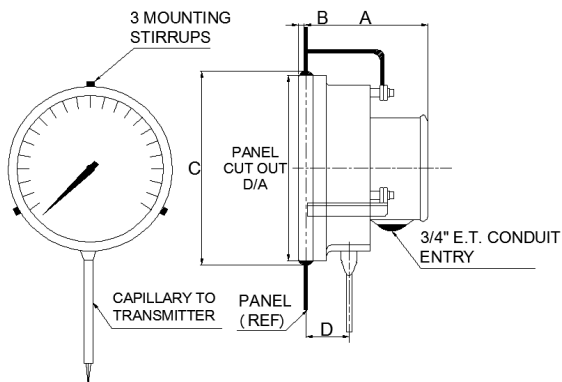
SHICO. SELF-POWER CONTENTS GAUGE

MODEL : SHC-300 Series

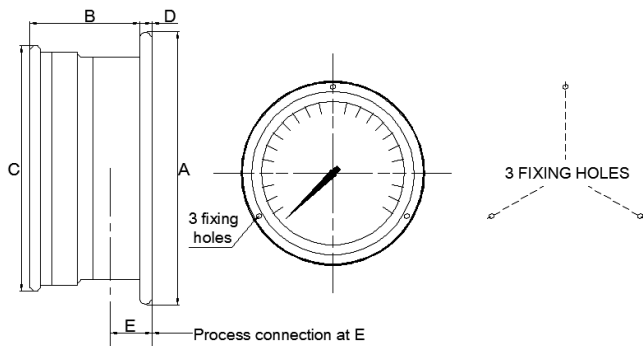
OUTLINE/INSTALLATION DIMENSIONS



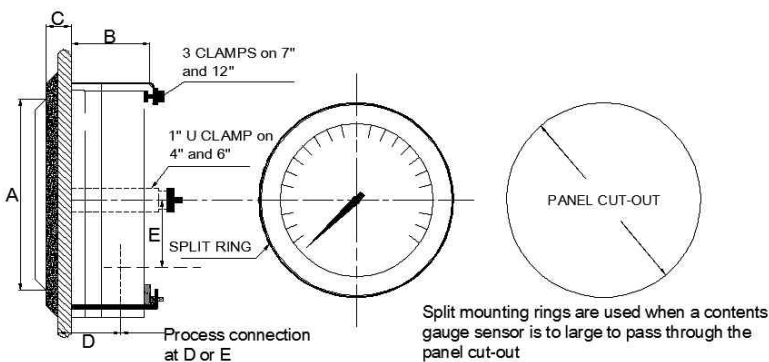
SIZE	A	B	C	D
100	128	45	113	18.7
150	198	54	172	21



SIZE	A	B	C	D
100	12	45	113	18.7
150	15	54	172	21



SIZE	A	B	C	D	E
100	128	45	113	12	18.7
150	198	54	172	15	21



SIZE	A	B	C	D	E
100	12	45	113	100.5	18.7
150	15	54	172	156	21



SAM HOI INDUSTRIAL CO., LTD.

#48-2, 66-BeonGil, Golden root-Ro, Juchon Myeon, Gimhae-city Gyeongnam, Korea

Tel. +82-55-321-0578 Fax. +82-55-321-0573

E-mail: shico007@chol.com Homepage : www.shico.co.kr

C-28

SHICO. SELF-POWER CONTENTS GAUGE

MODEL : SHC-300 Series

ORDERING INFORMATION

MODEL	'SHC-300' Series self-powered hydrostatic level/contents gauge	
CB	Transmitter mounted on tank bottom	
CS	Transmitter mounted on tank side	
IC	Transmitter mounted in tank	
CODE	Transmitter body material	
10	Mild steel construction	
20	Mild steel rubber covered	
30	Stainless steel	
CODE	Transmitter mask	
M	Fitted PTFE mask	
CODE	Number of indicators	
0	Single indicator	
CODE	Indication	
6P	152.4 panel mounted - die cast aluminum	
6W	152.4 wall mounted - die cast aluminum	
Poly P	150 panel mounted - glass filled polyester - weather proof	
Poly W	150 wall mounted - glass filled polyester - weather proof	
7P	177.8 panel mounted - die cast aluminum - weather proof	
7W	177.8 wall mounted - die cast aluminum - weather proof	
12P	304.8 panel mounted - die cast aluminum	
12W	304.8 wall mounted - die cast aluminum	
CODE	Indicator facia	
S	Standard black finish	
C	Chrome finish	
CODE	Certification	
1	Standard black finish	
2	Chrome finish	
CODE	ATTACHMENTS	
C1	One contact (see Note)	
C2	Two contact (see Note)	

SHC-300



SAM HOI INDUSTRIAL CO., LTD.

Gimhae-city Juchon Myun, Golden root-Ro, 66-BunGil, 48-2

Tel. + 82-55-321-0578~9 Fax. + 82-55-321-0573

E-mail: shico007@chol.com Homepage : www.shico.co.kr

C-29