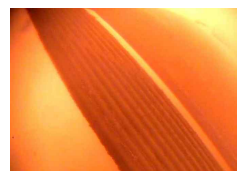


SHICO.

PORTABLE FURNACE CLINKER MONITORING SYSTEM

MODEL : SHP2000 PT Series



■ INTRODUCTION

SH2000-PT can be used in the condition of extremely high temperature inside furnace. It is possible to be installed and operated manually to observe the ignition condition and upper part of furnace wall. The sensor installed at the end of lens tube provides warning function of buzzer sound when internal temperature inside furnace exceeds beyond the predetermined level. SHP2000 is designed so that air hoses and cables are to be easily detachable, also air cooling systems and image storage devices to be connected.

SHP2000 is light and easily portable.

■ SPECIFICATION

1) FURNACE CCTV CAMERA ASSEMBLY

- Camera Type
1/2" Interline transper CCD
- Power Supply
AC 100V~230V. 50Hz / 60Hz
DC 24V, DC 125V
- System
NTSC / PAL
- Cooling Type
Double air cooling system
- Minimum Light Of Illumination
0.1 Lux 0.4 Mega Pixel

- Auto / Manual Control Function
- Maximum Usable Temperature
- 2000°C
- Lens Mount
Fixed Focus Lens

2) TRUNK ASSEMBLY

- Power Supply
AC 110V~240V, 50 Hz / 60 Hz
- Usual Temperature
-20°C~60°C
- Monitor
LCD Color Monitor(7", 9", 10.2", 14")
PAL / NTSC

3) COOLING AIR UNIT

- Setting Pressure Range
3.5 bar ~ 7 bar
- Maximum Operating Pressure
10 bar
- Nominal Filtration Rate
5µm
- Usual Temperature
-10°C~60°C
- Compressed Air Unit Type
F.R Combination



SAM HOI INDUSTRIAL CO., LTD.

#48-2, 66-BeonGil, Golden root-Ro, Juchon Myeon, Gimhae-city Gyeongnam, Korea

Tel. + 82-55-321-0578 Fax. + 82-55-321-0573

E-mail: shico007@chol.com Homepage : www.shico.co.kr

SHICO.

MODEL : SHP2000 PT Series

PORTABLE FURNACE CLINKER MONITORING SYSTEM

■ TECHNICAL SPECIFICATION

No	Item	Specification	Unit	Qt'y	Remark
1	Mini Trunk Assembly		set	1	
	- Air Filtration System	F74G-4AN-QD1	ea	1	
		F74H-4AD-AD0	ea	1	
	- Pressure Regulator	R74G-4AK-RMG	ea	1	
	- 9" LCD Color Monitor		ea	1	
	- 5Port Multi Tap		ea	1	
	- Umbilical Cord	3~5m	ea	1	
2	Furnace Camera Assembly		set	1	
	- Furnace Lens	47",90,55-Degree	ea	2	Each
	- Light Volume Control	220V, 50/60Hz, SPDT	ea	1	
	- CCTV Housing Assembly	BNC, 220V, 50/60Hz	ea	1	
	- CCTV Camera	NTSC, 0.35Lux, 60Hz	ea	1	
3	Video Record 7" LCD SCR		set	1	
	- AC Power Adapter		ea	1	
	- Audio/Visual Connection Cable		ea	1	
	- USB Cable		ea	1	
	- Remote Control		ea	1	
	- CD ROM USB Drive		ea	1	
4	Accessory		set	1	
	- Air Tube	25m	ea	1	
	- Supply Connection	1/2" NPT	ea	1	



SAM HOI INDUSTRIAL CO., LTD.

#48-2, 66-BeonGil, Golden root-Ro, Juchon Myeon, Gimhae-city Gyeongnam, Korea

Tel. + 82-55-321-0578 Fax. + 82-55-321-0573

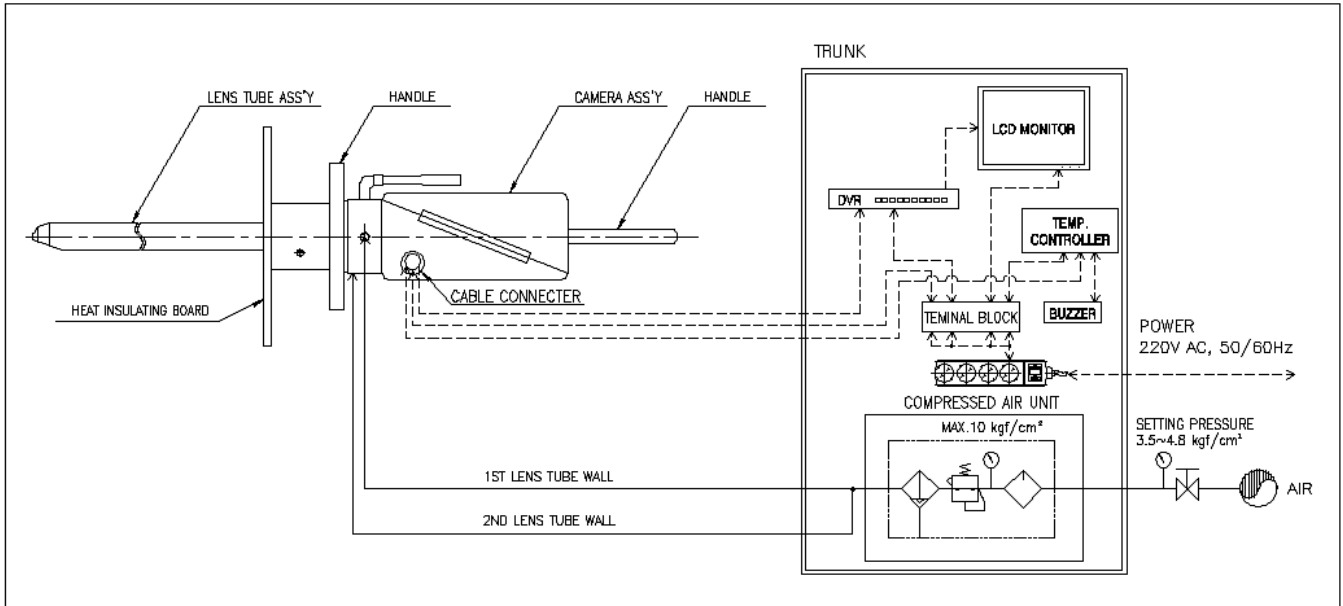
E-mail: shico007@chol.com Homepage : www.shico.co.kr

SHICO.

MODEL : SHP2000 PT Series

PORTABLE FURNACE CLINKER MONITORING SYSTEM

■ PORTABLE FURNACE CCTV CAMERA CONFIGURATION



■ SYSTEM COMPOSITION

- FURNACE CCTV CAMERA ASSEMBLY
- HANDLE & HEAT INSULATING BOARD
- COOLING AIR UNIT
- LCD MONITOR
- DVR
- TEMPERATURE SENSOR & CONTROLLER
- BUZZER

■ PART NUMBER

CODE	VIEWING TYPE
ST1	STRAIGHT VIEWING Diagonal : 70°, Horizontal : 54°, Vertical : 45°
ST2	STRAIGHT VIEWING Diagonal : 90°, Horizontal : 70°, Vertical : 58°
ST3	STRAIGHT VIEWING Diagonal : 110°, Horizontal : 85°, Vertical : 70°
ST4	STRAIGHT VIEWING etc
DW1	DOWN VIEWING 70° ELBOWED TYPE
DW2	DOWN VIEWING 55° ELBOWED TYPE

CODE	PROBE LENS LENGTH
1	500mm
2	600mm
3	700mm
4	800mm
5	900mm
6	1000mm
7	1100mm
8	etc

SHP2000 -



SAM HOI INDUSTRIAL CO., LTD.

#48-2, 66-BeonGil, Golden root-Ro, Juchon Myeon, Gimhae-city Gyeongnam, Korea

Tel. +82-55-321-0578 Fax. +82-55-321-0573

E-mail: shico007@chol.com Homepage : www.shico.co.kr

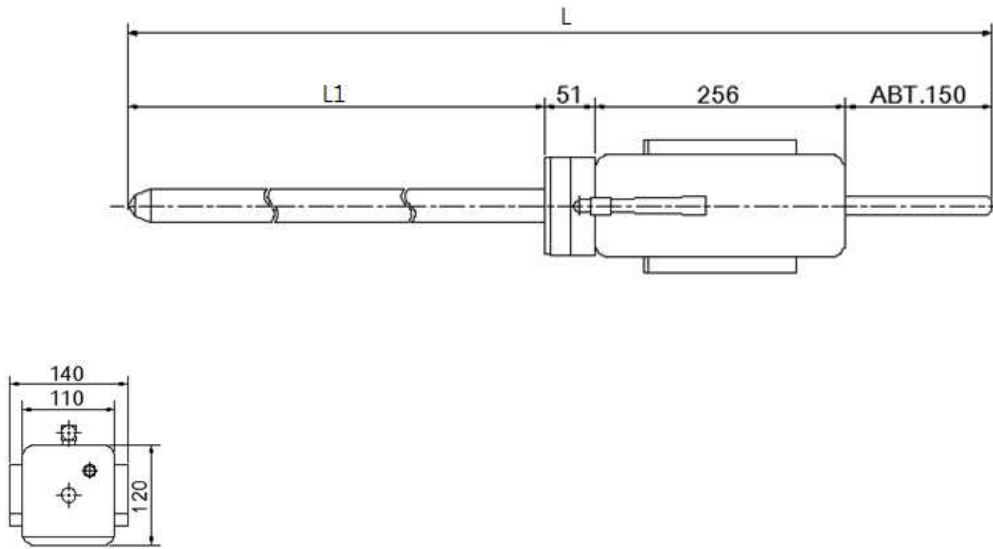
SHICO.

MODEL : SHP2000 PT Series

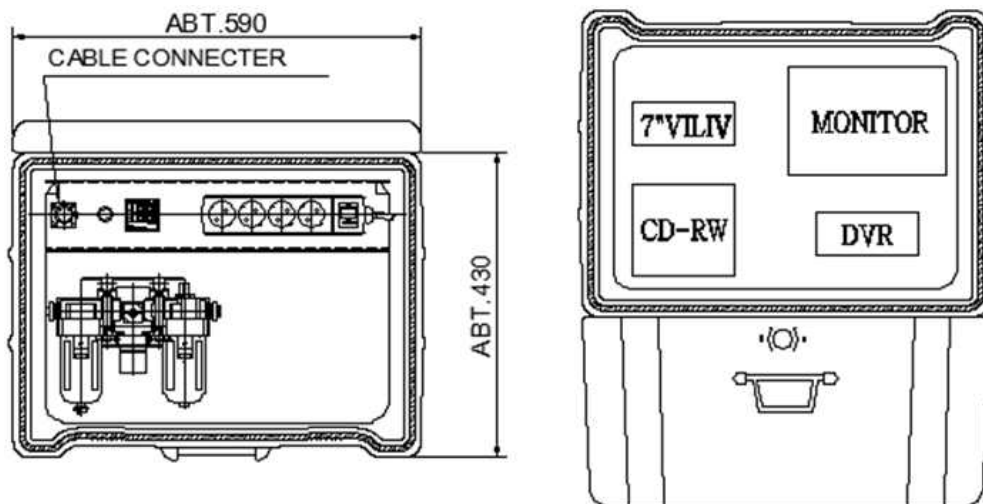
PORTABLE FURNACE CLINKER MONITORING SYSTEM

■ DIMENSION

■ LENS TUBE



■ TRUNK



SAM HOI INDUSTRIAL CO., LTD.

#48-2, 66-BeonGil, Golden root-Ro, Juchon Myeon, Gimhae-city Gyeongnam, Korea

Tel. +82-55-321-0578 Fax. +82-55-321-0573

E-mail: shico007@chol.com Homepage : www.shico.co.kr