

SHICO. REFLEX TYPE LEVEL GAUGE

MODEL : SRG Series

The reflex liquid level gauge has a sturdily constructed body, with the glass cover securely held by U-bolt to maintain a hermetic seal (see figure below). This type of level gauge features several parallel groves cut into glass surface that is in contact with the liquid. The resulting porismatic diffraction causes gases to appear white by reflection; liquids block by absorption. This the level of even transparent liquids can be clearly observed. Low-medium-and high-pressure types may be used according to application conditions, and units may be manufactured using carbon steel, stainless steel or a wide variety of other materials for parts in contact with the liquid. Type SRG reflex gauges have a number of further advantages including light weight, availability of long visible lengths, and low price.

SRG-1 Type



Material : CARBON STEEL
STAINLESS STEEL
BRONZE
Pressure : 1-40Kg/cm²
Size : 15A, 20A, 25A.

SRG-2 Type

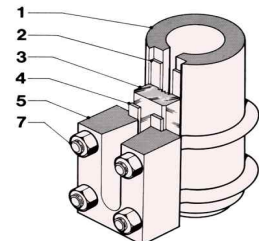
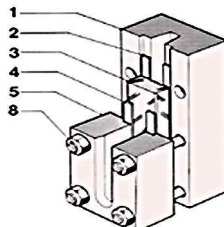
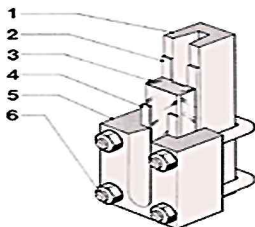


Material : CARBON STEEL
STAINLESS STEEL
Pressure : 1-100Kg/cm²
Size : 15A, 20A, 25A.

SRG-3 Type



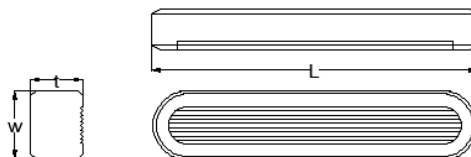
Material : CARBON STEEL
STAINLESS STEEL
BRONZE
Pressure : 1-30Kg/cm²
Size : 15A, 20A, 25A.



| NO | COMPONENT |
|----|-----------------------|
| 1 | Center piece |
| 2 | Sealing joint |
| 3 | Reflex glass |
| 4 | Cushion joint |
| 5 | Cover plate |
| 6 | U stud bolt with nuts |
| 7 | O stud bolt with nuts |
| 8 | Bolt with nut |

■ SIGHT GLASS

These glass have one smooth face (external face) and the other face provided with moulded prismatic grooves (inter face).



| SIZE | LENGTH | WIDTH | THICKNESS |
|------|--------|-------|-----------|
| #1 | 115 | 34 | 17 |
| #2 | 140 | 34 | 17 |
| #3 | 165 | 34 | 17 |
| #4 | 190 | 34 | 17 |
| #S4 | 200 | 34 | 17 |
| #5 | 220 | 34 | 17 |
| #6 | 250 | 34 | 17 |
| #7 | 280 | 34 | 17 |
| #S7 | 300 | 34 | 17 |
| #8 | 320 | 34 | 17 |
| #9 | 340 | 34 | 17 |
| #10 | 400 | 34 | 17 |



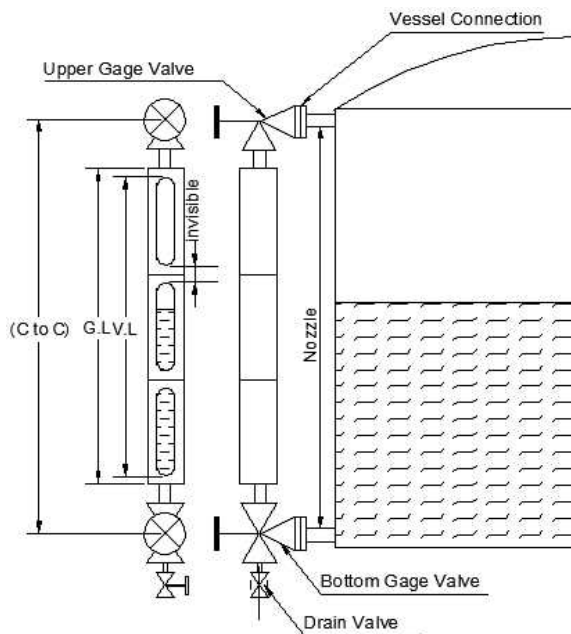
SAM HOI INDUSTRIAL CO., LTD.

Gimhae-city Juchon Myun, Golden root-Ro, 66-BunGil, 48-2
Tel. + 82-55-321-0578~9 Fax. + 82-55-321-0573
E-mail: shico007@chol.com Homepage : www.shico.co.kr

SHICO. REFLEX TYPE LEVEL GAUGE

MODEL : SRG Series

■ INDICATION OF LIQUID GAUGE



■ STANDARD DIMENSION TABLE

| NO | SIZE GAUGE | V-L | G-L | C to C |
|------|------------|------|------|--------|
| 1 | 1x1 | 90 | 130 | 320 |
| | 2x1 | 115 | 155 | 345 |
| | 3x1 | 140 | 180 | 370 |
| | 4x1 | 165 | 205 | 395 |
| | S4x1 | 175 | 215 | 405 |
| | 5x1 | 195 | 235 | 425 |
| | 6x1 | 225 | 265 | 455 |
| | 7x1 | 255 | 295 | 485 |
| | S7x1 | 275 | 315 | 505 |
| | 8x1 | 295 | 335 | 525 |
| 9x1 | 315 | 355 | 545 | |
| 10x1 | 375 | 415 | 605 | |
| 2 | 7x2 | 550 | 590 | 780 |
| | 8x2 | 630 | 670 | 860 |
| | 9x2 | 670 | 710 | 900 |
| | 10x2 | 790 | 830 | 1020 |
| 3 | 7x3 | 845 | 885 | 1075 |
| | 8x3 | 965 | 1005 | 1195 |
| | 9x3 | 1025 | 1065 | 1255 |
| | 10x3 | 1205 | 1245 | 1435 |
| 4 | 7x4 | 1140 | 1180 | 1370 |
| | 8x4 | 1300 | 1340 | 1530 |
| | 9x4 | 1380 | 1420 | 1610 |
| | 10x4 | 1620 | 1660 | 1850 |
| 5 | 7x5 | 1435 | 1475 | 1665 |
| | 8x5 | 1635 | 1675 | 1865 |
| | 9x5 | 1735 | 1775 | 1965 |
| | 10x5 | 2035 | 2075 | 2265 |
| 6 | 7x6 | 1730 | 1770 | 1960 |
| | 8x6 | 1970 | 2010 | 2200 |
| | 9x6 | 2090 | 2130 | 2320 |
| 7 | 7x7 | 2025 | 2065 | 2255 |
| | 8x7 | 2305 | 2345 | 2535 |
| | 9x7 | 2445 | 2485 | 2675 |
| 8 | 7x8 | 2320 | 2360 | 2550 |
| | 8x8 | 2640 | 2680 | 2870 |

■ SERVICE MAINTENANCE

After the level gauge is first put into service, or after change of glass once the level gauge has reached its normal operating temperature and pressure, carefully compress the glass joint by following up the tightening bolt working at opposite sides alternately, starting from the middle.

The must be repeated several times within the first hours, and in case any sign of leaks should appear. Use of torque spanner is compulsory. If perfect sealing cannot be obtained in this way it will be necessary to replace the joints and eventually the glass too.

■ DISMOUNTING

- Shut off the cocks, let out the pressure and remove the level gauge body from the cocks or the valves.
- Loosen the tightening bolts and remove all component pieces.
- Clean the sealing and cushion surface very carefully, making sure that they are clear of any remnants of joints
- Smear the threads of the tightening bolts with a thin layer of graphitized grease.

■ REASSEMBLING

- Fit in a new glass with new joints (never re-use joints which have already been in service) : remember that the sealing joint must be placed on the side where the grooves are.
- Reassemble all the components in the right sequence. Tighten the bolts thoroughly.
- Never grip the level gauge body in a vice during the reassembling, but put it on a plane surface.
- Never use adhesive or hermetic mastics. Remember that all surface must be perfectly clean.

■ WHEN ORDERING

- Center to center distance between connection (C to C)
- Standard, Size and Finishing of connections.



SAM HOI INDUSTRIAL CO., LTD.

#48-2, 66-BeonGil, Golden root-Ro, Juchon Myeon, Gimhae-city Gyeongnam, Korea

Tel. +82-55-321-0578 Fax. +82-55-321-0573

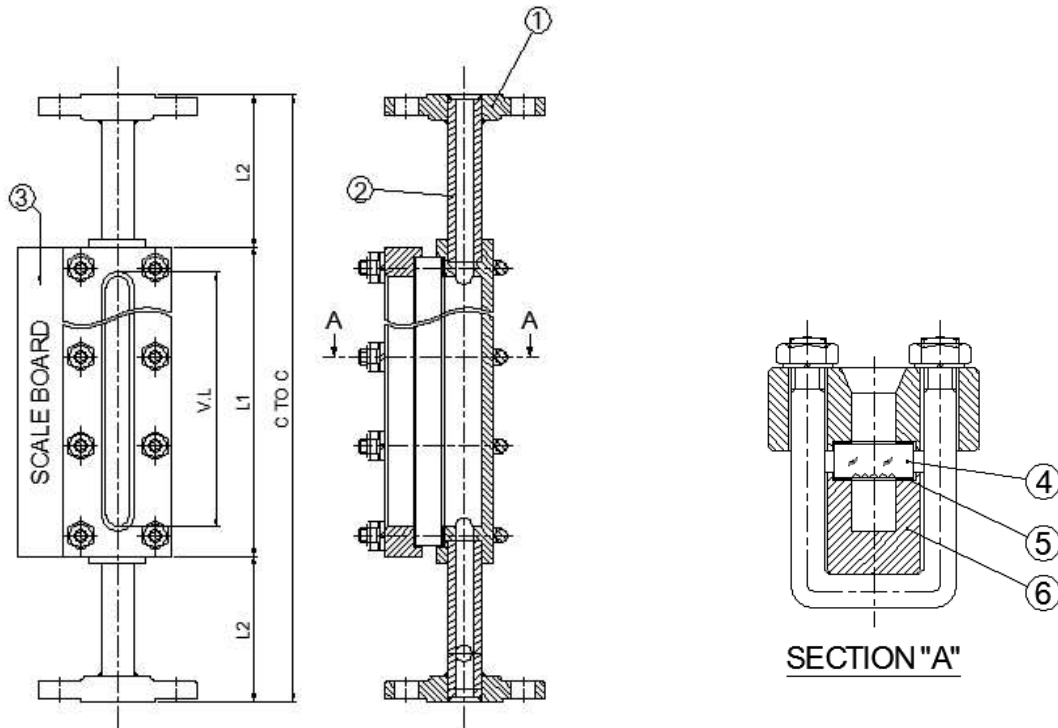
E-mail: shico007@chol.com Homepage : www.shico.co.kr

C-8

SHICO. REFLEX TYPE LEVEL GAUGE

MODEL : SRG Series

■ DIMENSION



■ SPECIFICATION

| | |
|----------------------|---------------------|
| C TO C | 530 |
| V.L | 315 |
| L1 | 355 |
| L2 | 87.5 |
| CASE SIZE | 340 x 1 |
| CON'N SIZE | ANSI 1/2" 150# SORF |
| OPERATING PRESS/TEMP | 420kPag / 55°C |

■ PART NAME

| NO | DESCRIPTION | MATERIAL | Q'ty | SIZE |
|----|----------------|--------------|------|-------------------|
| 1 | Con'n Flange | A105 | 2 | 1/2" 150# SORF |
| 2 | Pipe | A106 GR.B | 2 | 1/2" |
| 3 | Scale Board | SS304 | 1 | |
| 4 | Gauge Glass | BOROSILICATE | 1 | |
| 5 | Sealing Gasket | TEFLON | 1 | |
| 6 | Gauge Body | A105 | 1 | |



SAM HOI INDUSTRIAL CO., LTD.

#48-2, 66-BeonGil, Golden root-Ro, Juchon Myeon, Gimhae-city Gyeongnam, Korea

Tel. +82-55-321-0578 Fax. +82-55-321-0573

E-mail: shico007@chol.com Homepage : www.shico.co.kr

C-9