

SHICO. TRANSPARENT TYPE LEVEL GAUGE

MODEL : STRG Series

The transparent liquid level gauges, like the reflex type, consist of the body, with the glass and cover held by stud bolts to maintain a hermetic seal (see figure below).

Transparent gauges allow observation of liquid level through two sheets of transparent glass, marking them applicable to colored and non-transparent liquids. For high-pressure, high-temperature or alkaline surfaces of the glass sheets,

not only protecting the glass, but improving pressure-and heat-resistance.

A lighting device may also be provided for even clearer confirmation of liquid.

STRG-1 Type



Material : CARBON STEEL
STAINLESS STEEL
Pressure : 1-50Kg/cm²
Size : 20A, 25A.

STRG-2 Type

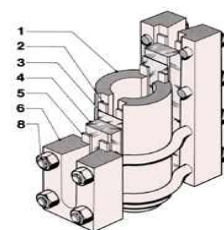
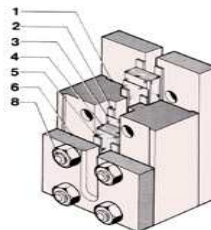
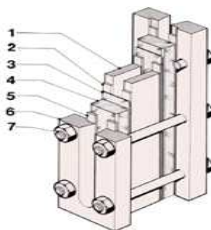


Material : CARBON STEEL
STAINLESS STEEL
Pressure : 1-150Kg/cm²
Size : 20A, 25A.

STRG-3 Type



Material : CARBON STEEL
STAINLESS STEEL
Pressure : 1-30Kg/cm²
Size : 20A, 25A.

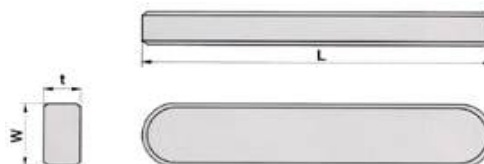


■ PART CONSTRUCTION

1. Center piece
2. Sealing joint
3. Glass protection sheet
4. Plate glass
5. Cushion joint
6. Cover plate
7. Bolt with nut
8. Stud bolt with nut

■ SIGHT GLASS

These glass have both smooth face for application with transparent level gauge



SIZE	LENGTH	WIDTH	THICKNESS
#1	115	34	17
#2	140	34	17
#3	165	34	17
#4	190	34	17
#S4	200	34	17
#5	220	34	17
#6	250	34	17
#7	280	34	17
#S7	300	34	17
#8	320	34	17
#9	340	34	17
#10	400	34	17



SAM HOI INDUSTRIAL CO., LTD.

#48-2, 66-BeonGil, Golden root-Ro, Juchon Myeon, Gimhae-city Gyeongnam, Korea

Tel. +82-55-321-0578 Fax. +82-55-321-0573

E-mail: shico007@chol.com Homepage : www.shico.co.kr

C-3

SHICO. TRANSPARENT TYPE LEVEL GAUGE

MODEL : STRG Series

■ ILLUMINATOR

This is designed for intermediate pressure boiler, different from the conventional valve the valve stem moves only up and down to open and close the valve so that handle operation can be done light. Therefore, galling or rushing of stem, valve seat, etc. are limited.

■ SPECIFICATIONS

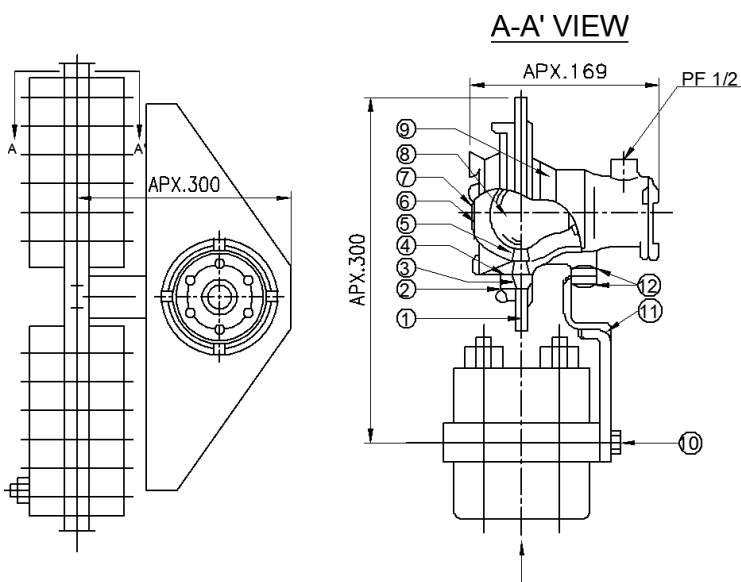
▣ Electric Specification

Voltage	100/240V, 50/60Hz
Bulb light	20W
Explosion-proof	D2G4

■ APPLICATION

Complete range of size : single and double section explosion-proof illuminators are made in single and double section styles for transparent level gauge. Double section illuminators require only one bulb for complete illumination of two gauge sections.

■ DIMENSION



ILLUMINATOR for
Transparent
Level gauge



ILLUMINATOR TYPE
(STRG-IL)

NO	Description	Q'TY	Specifications
01	Reflector	1	Methacrylate
02	Cover	1	AC4C
03	Bolt	3	SUS304
04	Glass Plate	1	GLASS
05	O-Ring	1	NBR
06	Gasket	1	T#1000
07	Cover	1	AC4C
08	Bulb Light	1	
09	Light Housing		AC4C
10	Bolt	2	SS41
11	Holder	1	SS41
12	Bolt Nut	1	SS41



SAM HOI INDUSTRIAL CO., LTD.

#48-2, 66-BeonGil, Golden root-Ro, Juchon Myeon, Gimhae-city Gyeongnam, Korea

Tel. +82-55-321-0578 Fax. +82-55-321-0573

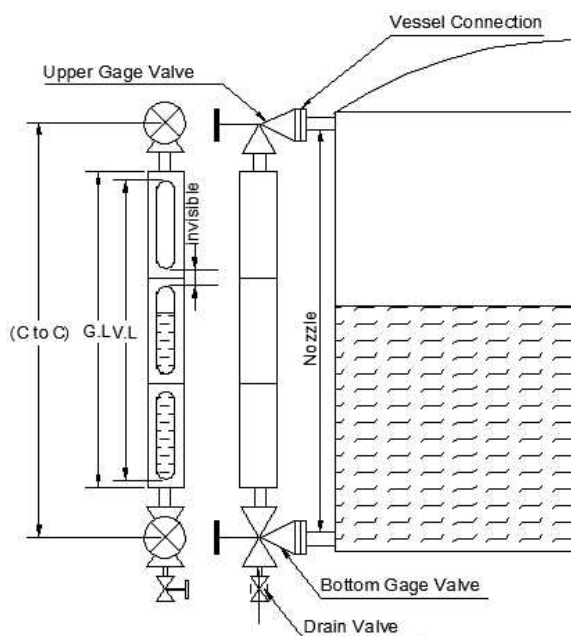
E-mail: shico007@chol.com Homepage : www.shico.co.kr

C-4

SHICO. TRANSPARENT TYPE LEVEL GAUGE

MODEL : STRG Series

■ INDICATION OF LIQUID GAUGE



■ STANDARD DIMENSION TABLE

NO	SIZE GAUGE	V-L	G-L	C to C
1	1x1	90	130	320
	2x1	115	155	345
	3x1	140	180	370
	4x1	165	205	395
	S4x1	175	215	405
	5x1	195	235	425
	6x1	225	265	455
	7x1	255	295	485
	S7x1	275	315	505
	8x1	295	335	525
9x1	315	355	545	
10x1	375	415	605	
2	7x2	550	590	780
	8x2	630	670	860
	9x2	670	710	900
	10x2	790	830	1020
3	7x3	845	885	1075
	8x3	965	1005	1195
	9x3	1025	1065	1255
	10x3	1205	1245	1435
4	7x4	1140	1180	1370
	8x4	1300	1340	1530
	9x4	1380	1420	1610
	10x4	1620	1660	1850
5	7x5	1435	1475	1665
	8x5	1635	1675	1865
	9x5	1735	1775	1965
	10x5	2035	2075	2265
6	7x6	1730	1770	1960
	8x6	1970	2010	2200
	9x6	2090	2130	2320
7	7x7	2025	2065	2255
	8x7	2305	2345	2535
	9x7	2445	2485	2675
8	7x8	2320	2360	2550
	8x8	2640	2680	2870

■ ANTI-CORROSIVE PLATE

Corrosion or erosion will occur on glass when steam (200°C and over) or Alkali solution is contacted with the surface of glass directly. In such a case, the following shielding plates should be used to protect glass.

- (a) Steam Natural mica
- (b) Alkali solution ... Transparent Acryl resin plate
- (c) Others ... Coating trifluoride resin on the gauge glass

When direct sunlight is shunned :

For both reflex and transparent gauge glass, both brown gauge glass is used to protect from direct sunlight.

(Specify the brown glass especially)



SAM HOI INDUSTRIAL CO., LTD.

#48-2, 66-BeonGil, Golden root-Ro, Juchon Myeon, Gimhae-city Gyeongnam, Korea

Tel. +82-55-321-0578 Fax. +82-55-321-0573

E-mail: shico007@chol.com Homepage : www.shico.co.kr

C-5

■ SERVICE MAINTENANCE

After the level gauge is first put into service, or after change of glass once the level gauge has reached its normal operating temperature and pressure, carefully compress the glass joint by following up the tightening bolt working at opposite sides alternately, starting from the middle. This must be repeated several times within the first hours, and in case any sign of leaks should appear. Use of torque spanner is compulsory. If perfect sealing cannot be obtained in this way it will be necessary to replace the joints and eventually the glass too.

■ DISMOUNTING

- Shut off the cocks, let out the pressure and remove the level gauge body from the cocks or the valves.
- Loosen the tightening bolts and remove all component pieces.
- Clean the sealing and cushion surface very carefully, making sure that they are clear of any remnants of joints
- Smear the threads of the tightening bolts with a thin layer of graphitized grease.

■ REASSEMBLING

- Fit in a new glass with new joints (never re-use joints which have already been in service) : remember that the sealing joint must be placed on the side where the grooves are.
- Reassemble all the components in the right sequence. Tighten the bolts thoroughly.
- Never grip the level gauge body in a vice during the reassembling, but put it on a plane surface.
- Never use adhesive or hermetic mastic. Remember that all surface must be perfectly clean.

■ WHEN ORDERING

- Center to center distance between connection (C to C)
- Standard, Size and Finishing of connections.

