

SHICO. DIAPHRAGM LEVEL SWITCH

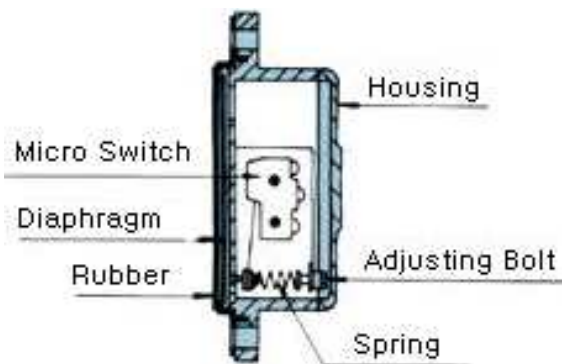
MODEL : SDLS-40 Series

SDLS-40 is perfect for use wherever flowable bulk materials are stored at atmospheric pressures. Can be mounted on blending bins supply bins, scale hoppers, packaging equipment, etc., wherever dependable and positive coordination of material level signal systems and equipment motor switches is required. A SDLS-40 maintains its operating efficiency in any mounted position - high or low, on flat or curved surfaces including pyramidal or conical bin bottoms.

■ OPERATING PRINCIPLE

Operates through a uniquely designed "floating" diaphragm which is free of the electric switch mechanism, this design feature, when coupled with the external sensitivity adjustment. Assures positive responds to pressure from all materials—even lighter weight ones.

A diaphragm movement of only 0.8m/m triggers the unit to perform its varied functions quickly, dependably.



■ TECHNICAL DATA

- Outside diameter : $\varnothing 210$
- Bolt circle : $\varnothing 175$
- Conduit connection : PF 1/2"
- Switch rating : AC250V 15A, DC125V 0.5A
- Diaphragm movement : 0.8m/m
- Ambient temperature : 60°C
- Color : metallic
- Installation : Side mounting
- Mounting method : Flange
- Material : Body-ALDC

■ SWITCH CONTACT RATING

Electric switch modules with one independent SPDT contacts rated at:

- AC 250V 15A



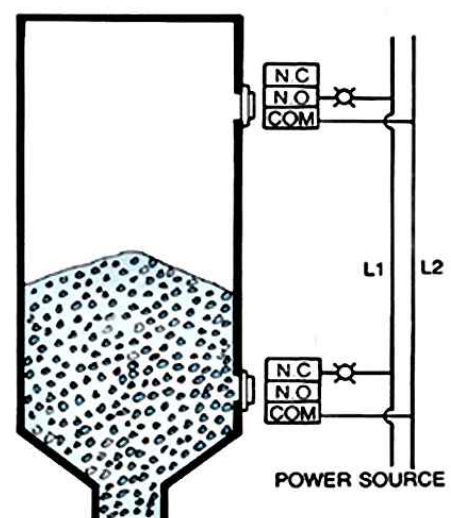
■ FEATURES

- SDLS-40 units can be installed at any angle at high or low level and can be tied into single signal and control point without counter weighing the S/W.
- Small size and light weight.
- Micro switch type
- Can adjust sensitively outside of the bin.

■ ENCLOSURE TYPE

- Weather proof

■ CONNECTION DIAGRAM



SAM HOI INDUSTRIAL CO., LTD.

#48-2, 66-BeonGil, Golden root-Ro, Juchon Myeon, Gimhae-city Gyeongnam, Korea

Tel. +82-55-321-0578 Fax. +82-55-321-0573

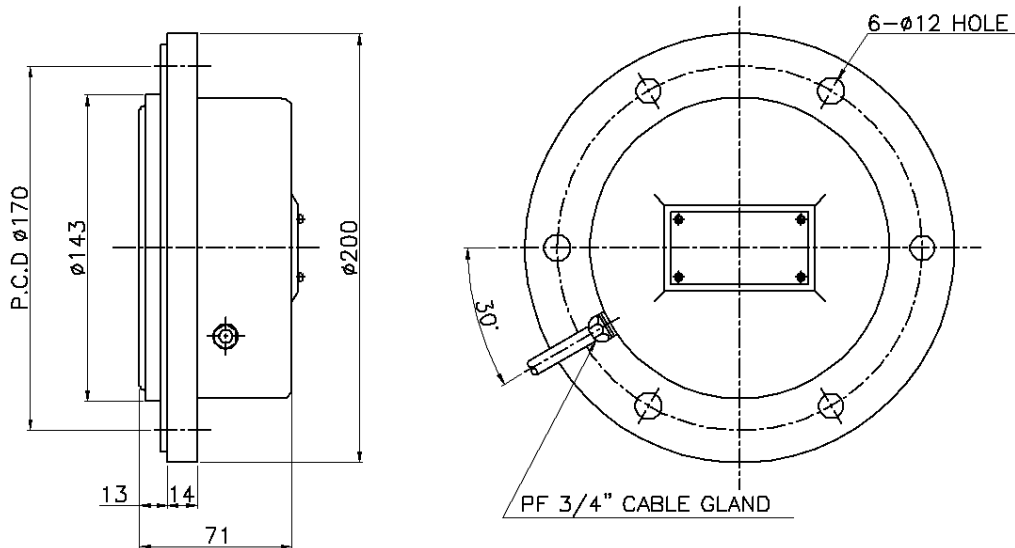
E-mail: shico007@chol.com Homepage : www.shico.co.kr

B-42

SHICO. DIAPHRAGM LEVEL SWITCH

MODEL : SDLS-40 Series

■ DIMENSIONS



■ APPLICATIONS

SDLS-40 can be mounted in various positions on a wide variety of applications. The illustration shows a number of typical positions.

No. 1,2,3,4-Top or bottom of blending bins to assure constant supply of material and to prevent over filling;

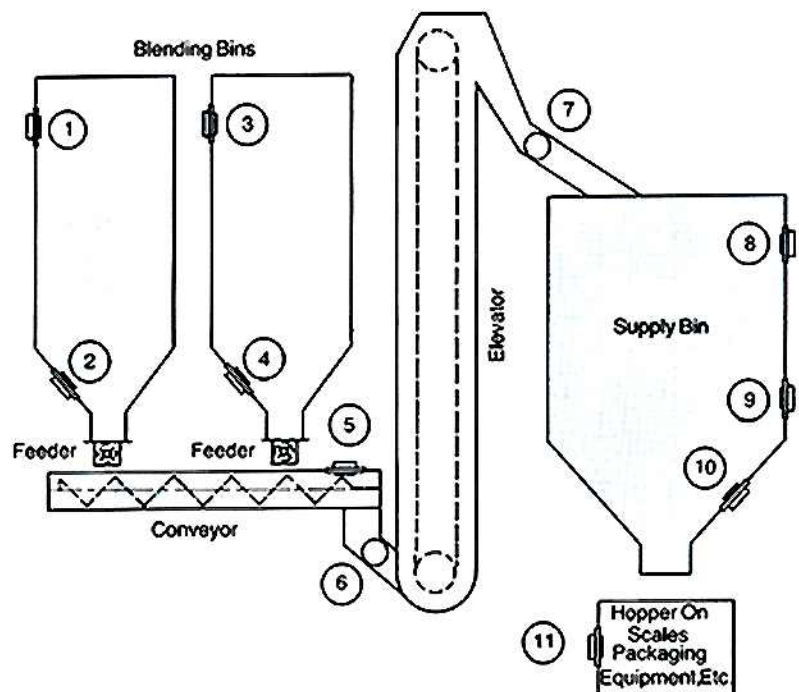
No. 5-To signal start of choke-up in screw conveyor;

No. 6-On elevator boot to indicate overfeed;

No. 7-On elevator discharge spout to signal start of choke-up;

No. 8,9,10-On supply bin to indicate material levels and to provide automatic shut-off of material flow when desired level is reached;

No. 11-On machinery hoppers for maintaining continuous material supply and to provide an automatic shut-off for weighing and packaging equipment before hopper is empty.



All SDLS-40 installations can be tied into a single signal and control point.



SAM HOI INDUSTRIAL CO., LTD.

#48-2, 66-BeonGil, Golden root-Ro, Juchon Myeon, Gimhae-city Gyeongnam, Korea

Tel. +82-55-321-0578 Fax. +82-55-321-0573

E-mail: shico007@chol.com Homepage : www.shico.co.kr

B-43