

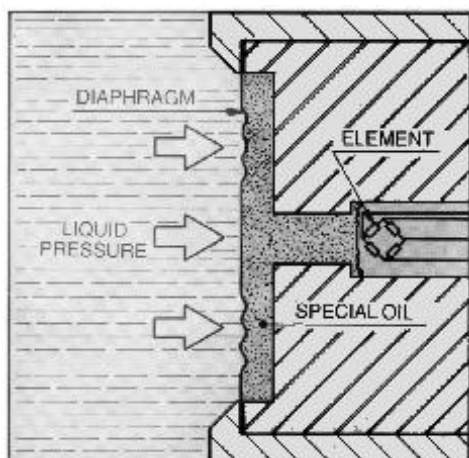
SHICO. MODEL : SH-300 Series PRESSURE TRANSDUCER TYPE LEVEL TRANSMITTER

These pressure sensors are used mainly to measure the hydrostatic pressure of liquids, and when used in conjunction with the SHICO remote level indicator are suitable for continuous level measurement



■ OPERATING PRINCIPLE

The SH-300 sensor has a diaphragm at its tip. The diaphragm has two semiconductor transducers attached to it which provide electrical signals corresponding to the liquid pressure exerted on the diaphragm. Power for these transducers is derived from the Converter/Supply unit which also transmits a 4-20mA current signal for the indicating and alarm units.



■ TECHNICAL DATA

- Installation : Top, Side mounting
- Mounting Method : Flange, Screw
- Mounting size : KS, JIS 80A 10K
- Rated pressure : 0.5Kg/cm²
- Max pressure : 1Kg/cm²
- Compensated temperature range : -20 to +80°C
- Operating temperature range : -20 to +80°C
- Linearly/Hysteresis : ±0.3% F.S
- Power Source : DC 24V 100mA
- Material : Case - AL, C
Flange - SUS304
Element Head - SUS304

■ ENCLOSURES TYPE

- Weather proof

■ STANDARD FEATURES

- KS, JIS flange
- Output signal : 4-20mA DC

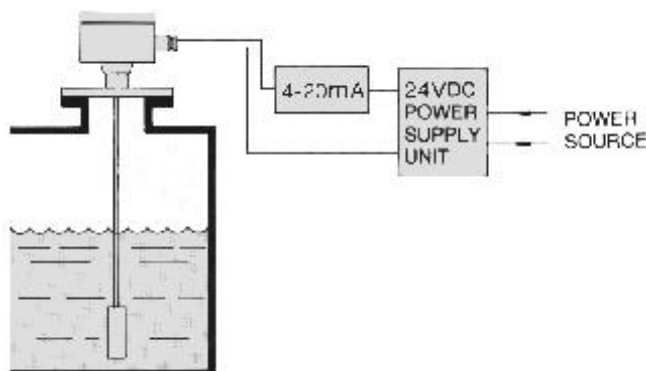
■ OPTIONAL FEATURES

- Flange ANSI, DIN
- Cable Length
- Control Unit
- Output signal : DC 1-5V

■ FEATURES

- Easily installed even in deep water
- Unaffected by wave motion on surface
- Unaffected by stirring or liquid freezing
- Compact rugged unit using semiconductor transducer
- Flat diaphragm of stainless steel for high sensitivity
- Easily maintained and checked

■ CONSTRUCTION

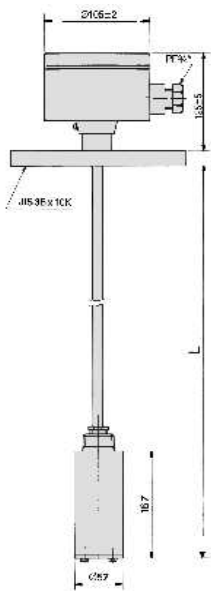


SAMHOI INDUSTRIAL CO., LTD.

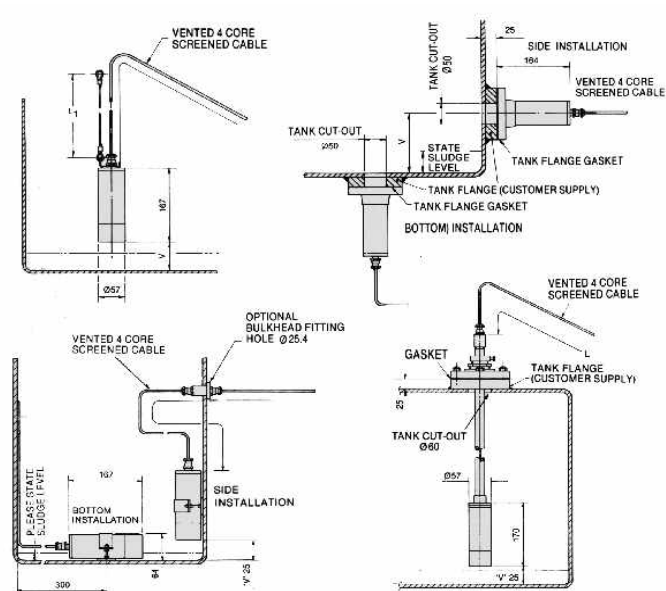
61-14 CHARYOUNG-DONG CHANGWON-CITY KYUNGNAM, KOREA
Tel. 0551) 251-0555(代) Fax. 0551) 251-0558

SHICO. MODEL : SH-300 Series PRESSURE TRANSDUCER TYPE LEVEL TRANSMITTER

■ DIMENSIONS



■ OUTLINE/INSTALLATION DIMENSIONS



■ ORDERING INFORMATION

MODEL	Electronic hydrostatic level transmitters (industrial)		
SH-300	Sensor plus 4 to 20mA transmitter		
CODE	Mounting		
1	Suspended tank - including wire clamp		
2	Clamped in tank - including clamp		
3	Pole mounting - including 10K 80A flange		
4	External mounting - including 10K 50A flange		
CODE	Body and capsule materials		
SS	Stainless steel body - inconel capsule		
AB	Aluminium body - Beryllium copper capsule coated		
CODE	Capsule range		
02	Maximum measured head at SG 1.0 = 2 meters		
03	Maximum measured head at SG 1.0 = 4 meters		
04	Maximum measured head at SG 1.0 = 8 meters		
05	Maximum measured head at SG 1.0 = 16 meters		
06	Maximum measured head at SG 1.0 = 32 meters		
CODE	Temperature rating of sensor		
NT	Operating temperature max. 75°C (occasional peaks of 90°C)		
HT	Operating temperature max. 100°C (occasional peaks of 120°C)		
CODE	Sensor mounting attitude		
S1	Horizontal		
E1	Vertical		

SH-300



SAMHOI INDUSTRIAL CO., LTD.

61-14 CHARYOUNG-DONG CHANGWON-CITY KYUNGNAM, KOREA

Tel. 0551) 251-0555(代) Fax 0551) 251-0558